



2020 | LA RIMER-HOMEWOOD MULTIMODAL GREENWAY EXTENSION

BAKERY OFFICE THREE: 350,000 SF
OPENING FALL OF 2020

COURTYARD REFRESH
F&B BUILDING
UNDER CONSTRUCTION
OPENING FALL OF 2020

1000 CAR GARAGE
OPENING FALL OF 2020

PENN AVENUE
MID BLOCK CROSSING

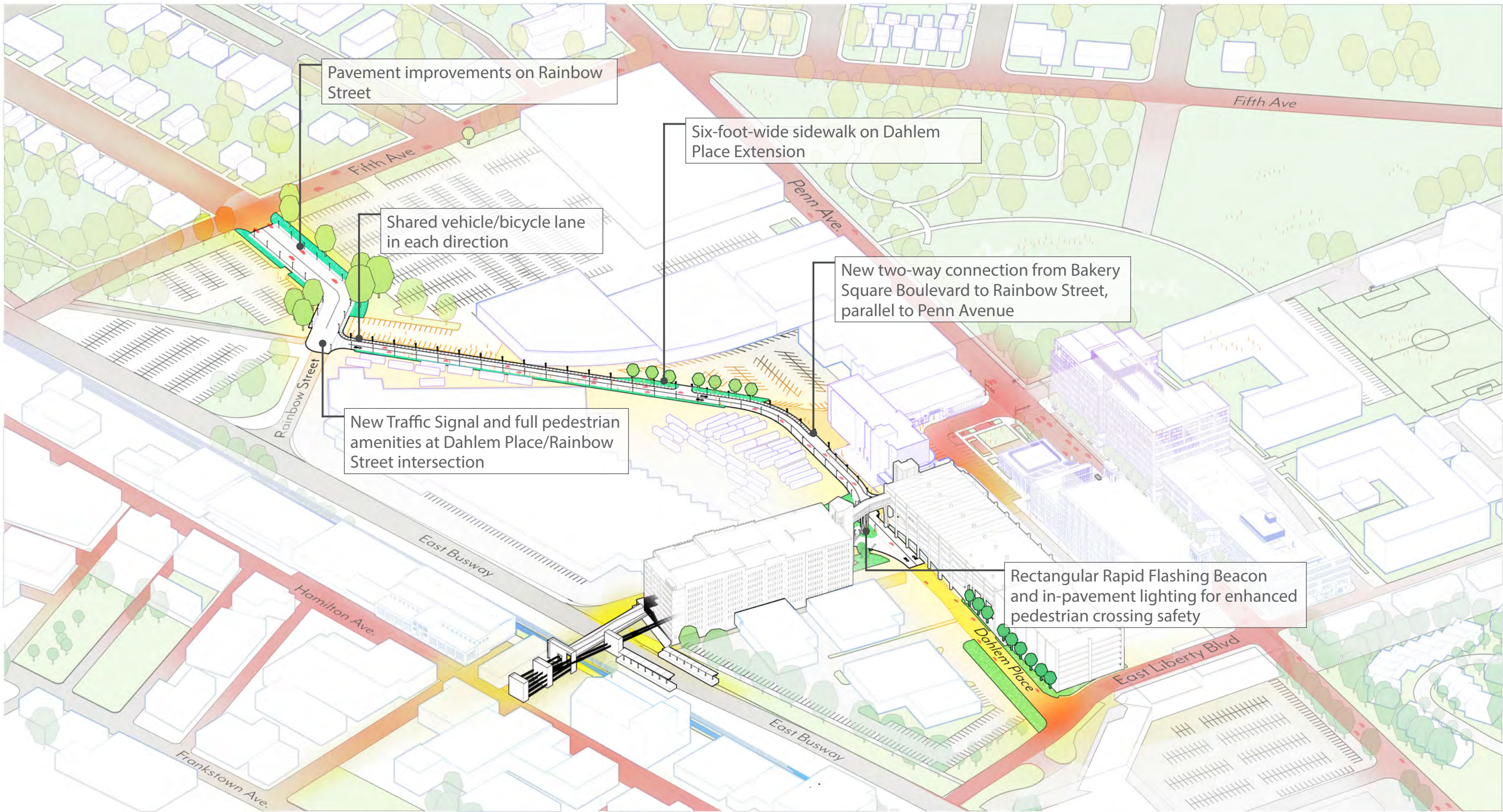
**FUTURE LARIMER
TRANSIT CENTER
& PEDESTRIAN
OVERPASS**

**PROPOSED LARIMER-
HOMWOOD MULTIMODAL
GREENWAY EXTENSION**

**BKSQ BUS STOP
IMPROVEMENTS**

BAKERY OFFICE FOUR: 61,000 SF
MOVE IN READY

BAKERY SQUARE 2020 PROGRESS PLAN



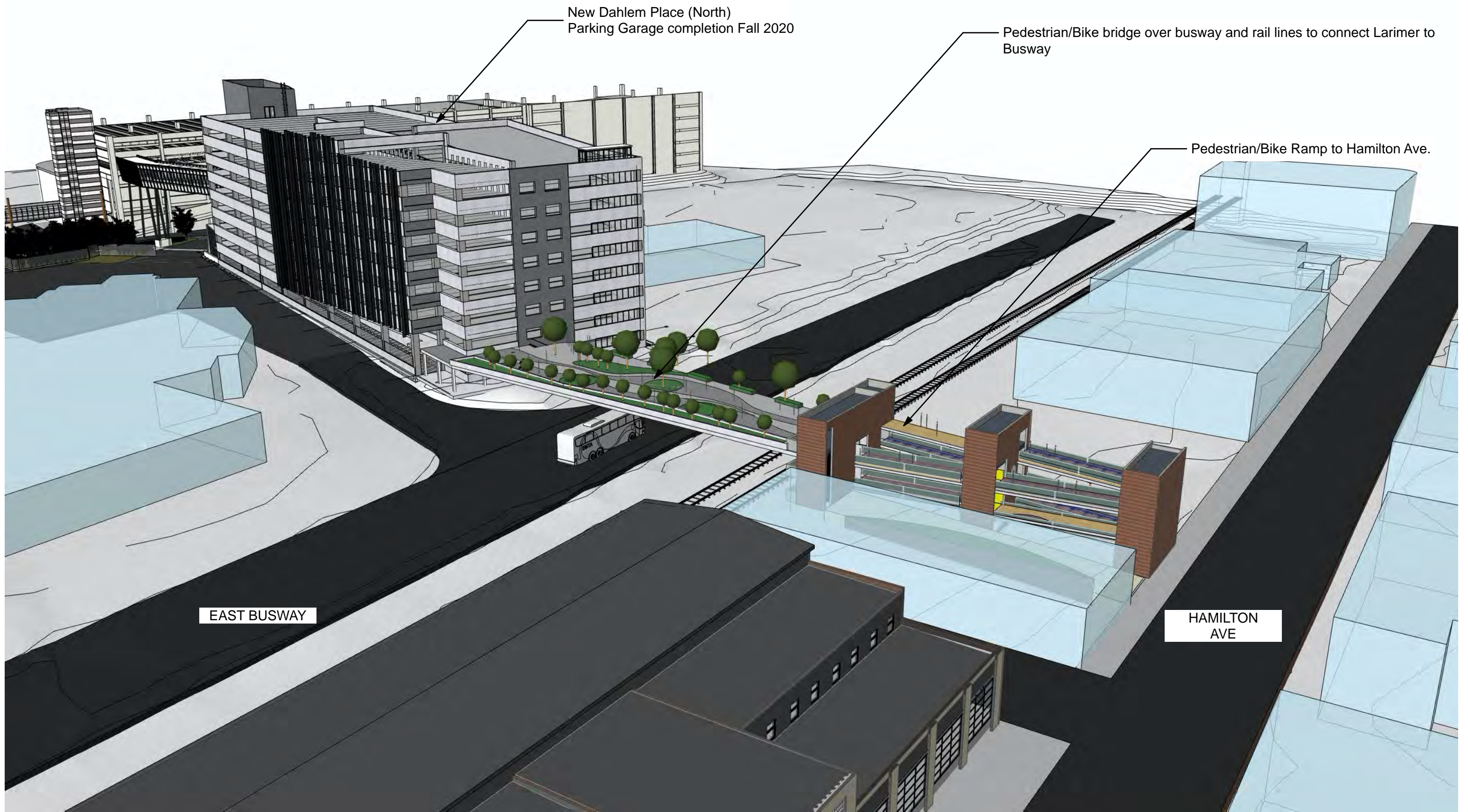
PROJECT RESULTS

The construction of the Larimer-Homewood Multimodal Greenway Extension provides a “relief valve” for the congested conditions on Penn Avenue, with projected reductions of 410 vehicles on Penn Avenue between Fifth Avenue and Bakery Square Boulevard during the AM peak hour and 320 vehicles in the same area during the PM peak hour.



VIEW OF DAHLEM PLACE TOWARD RAINBOW STREET

Street improvements include designated Bicycle sharrows to expand and offer improved Pittsburgh cycling connections, wide sidewalks, planting beds, and new LED street lights for improved pedestrian and vehicle safety.



HAMILTON AVENUE/LARIMER PEDESTRIAN/BIKE BRIDGE
Overall Bridge View

